



Using Energy 360 – For Newham Schools

Over 95% of Newham School Gas Meters have now been installed with Automated Meter Readers (AMRs). The AMRs send out meter reads every half hour. The Energy 360 Online Tool enables you to access this data. The raw data can be presented in a number of simple reports or tables. These tables can be adapted to meter, date, time and for CO2 usage. Tables and graphs can be exported as images or via CSV files into excel.

Please appreciate the log-in is for all schools so you will need to select your site.
Please do not change or save any data to the dashboard as this is schools-wide.

If you have any questions about using the 360 tool, your readings or how to reduce energy usage across your school please contact jan.reed@wildgarlic.net or visit www.newhamsustainableschools.com

Happy exploring – be patient as you learn the basic steps, the long-term savings you could make are huge!

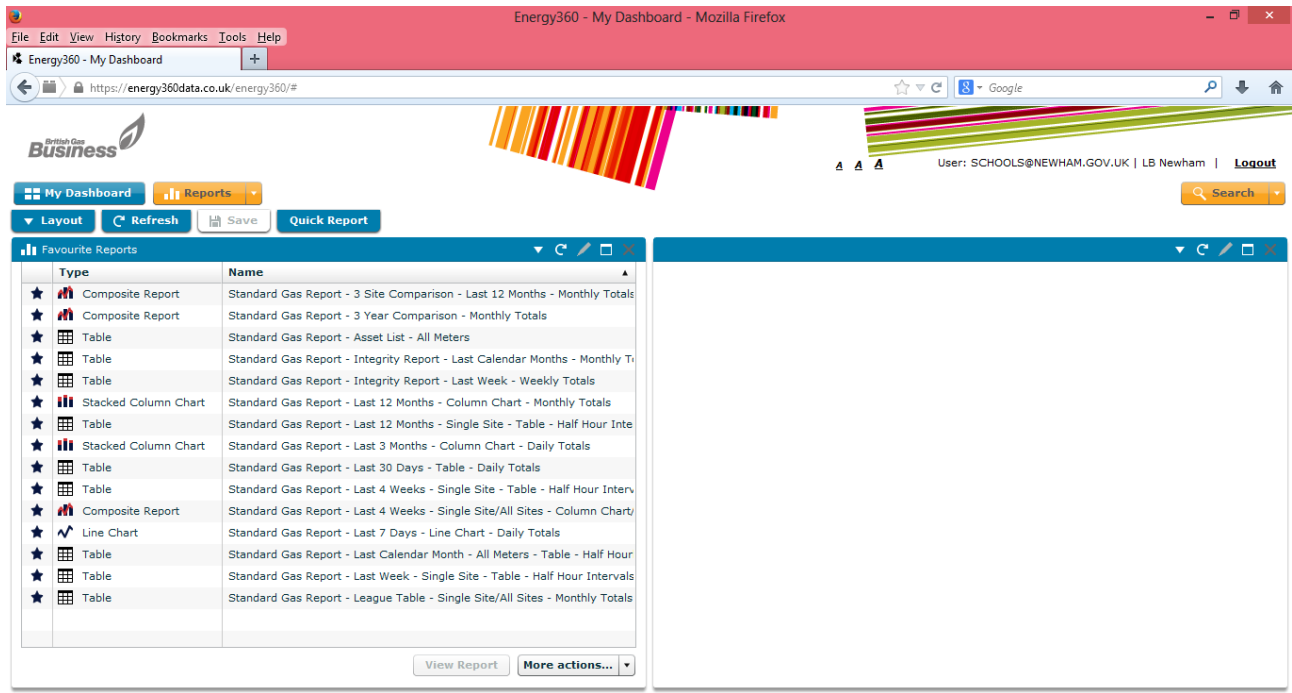
Web address is: <https://energy360data.co.uk/energy360/>

User name: **SCHOOLS@NEWHAM.GOV.UK**

Password: **ScH2509IBn**

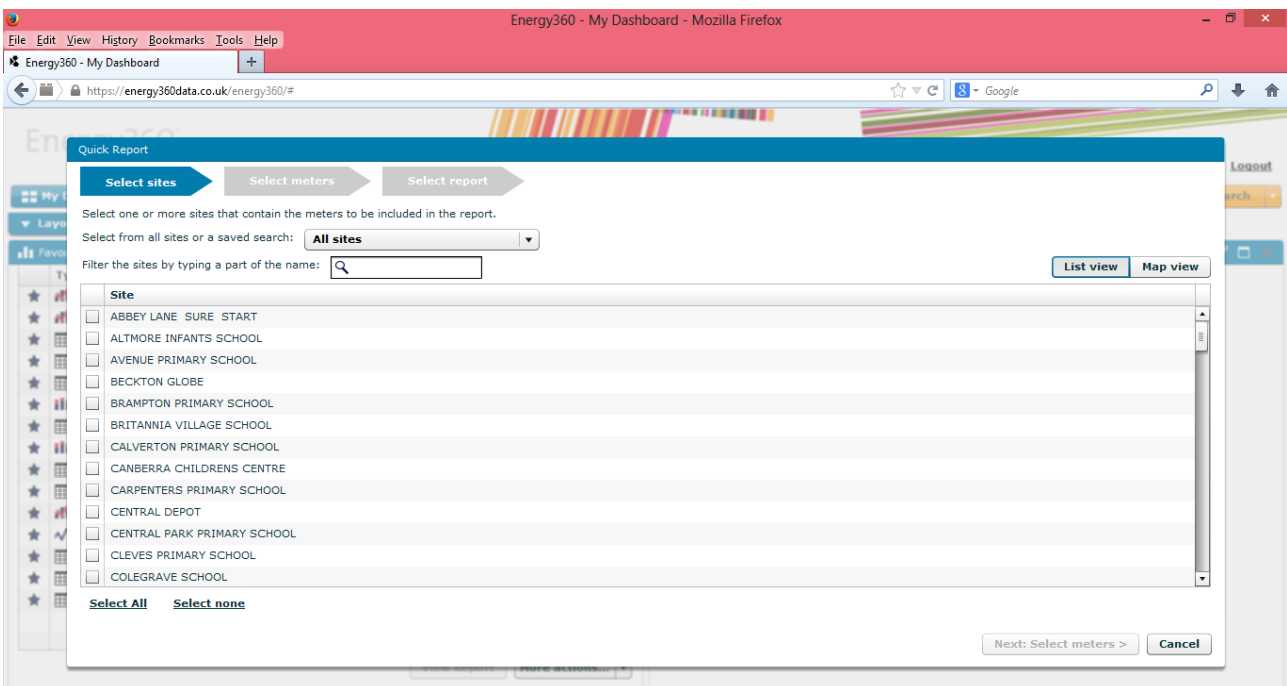
Both case sensitive.

After **log in** you should now see this screen



Click on **"Quick Report"**

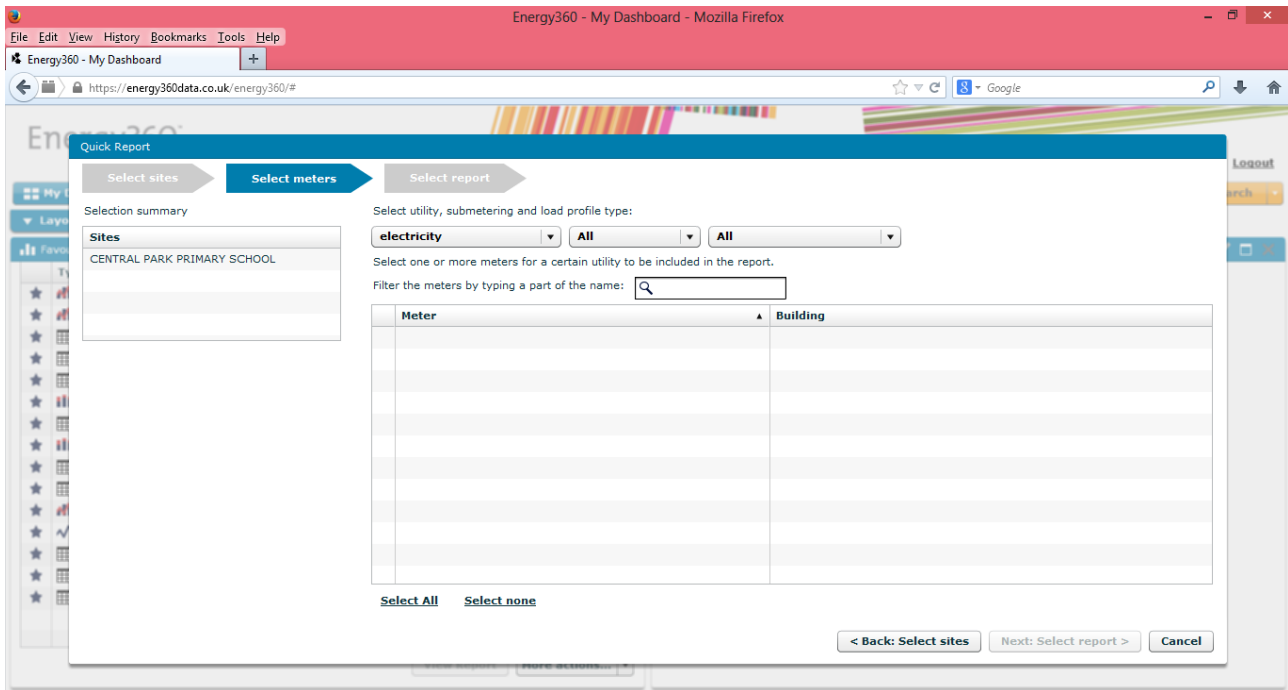
You should now see this screen



Select the property by either scrolling down or by typing in the search box.
Tick on the property required and then

Select: **"Next: Select meters >"**

You should now see this screen:

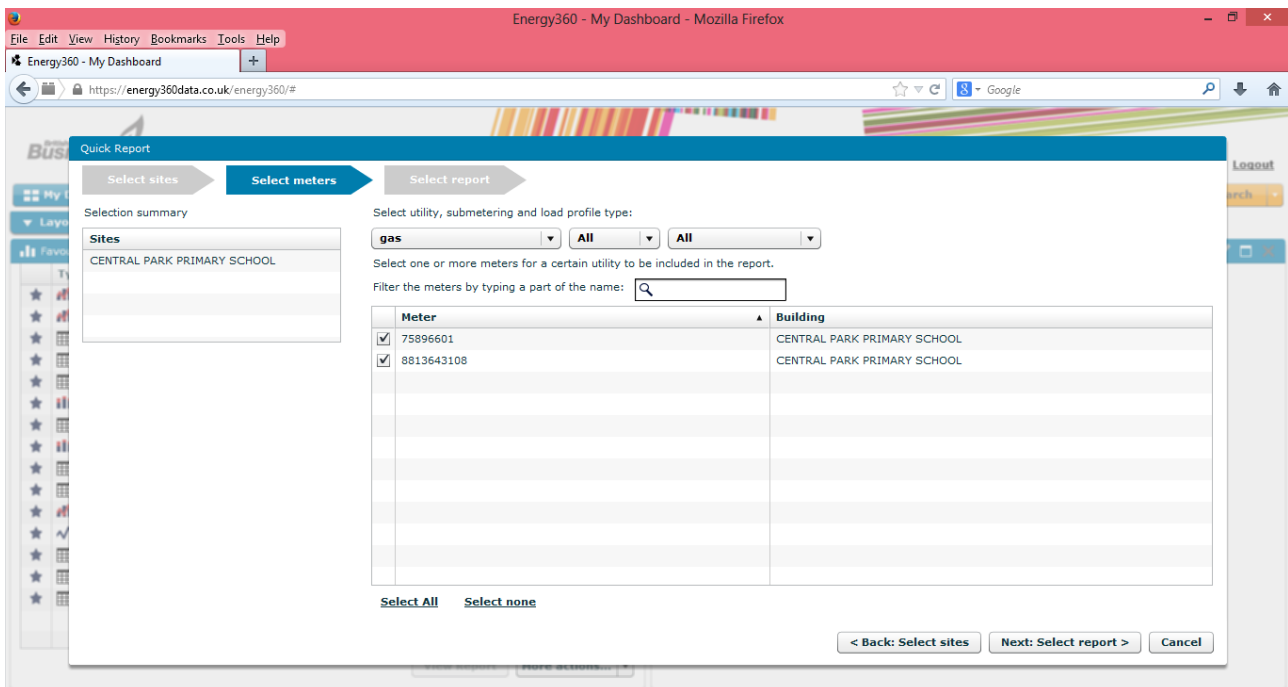


At the moment only Gas Meters are available to read via this system.

Select: "Gas"

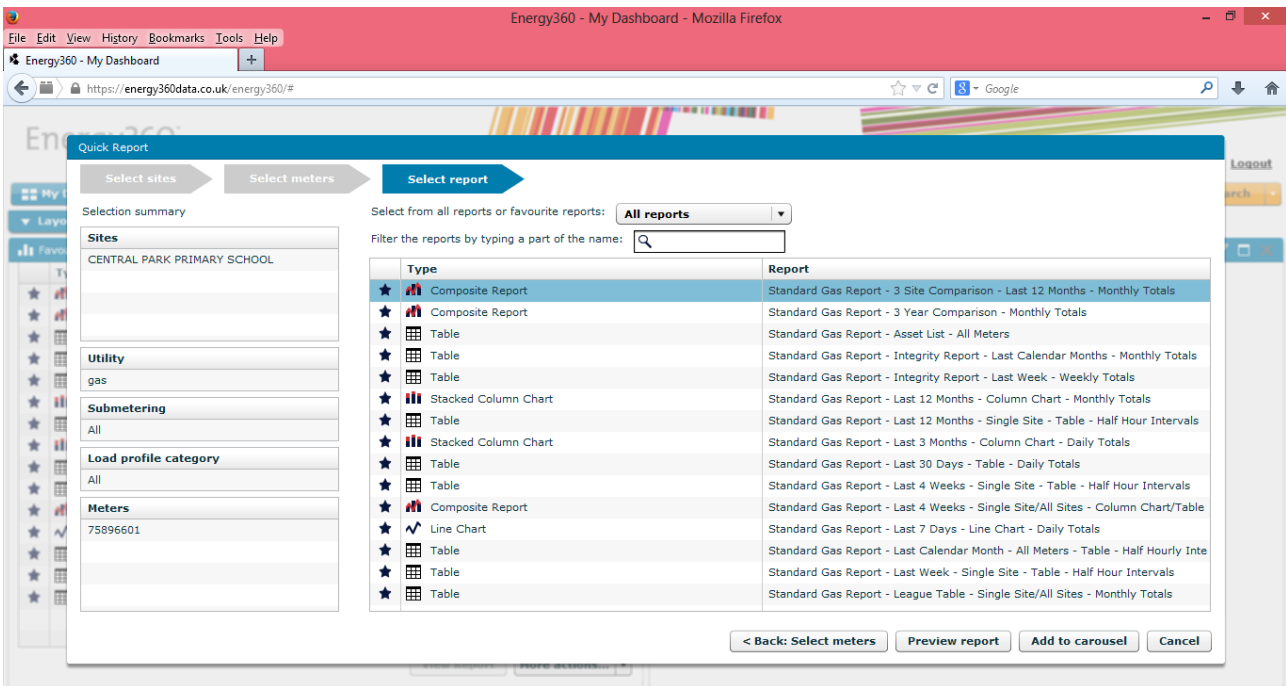
You will then be presented with a list of all the available Gas Meters to read at your chosen site.

Tick those meters you are interested in reports for.

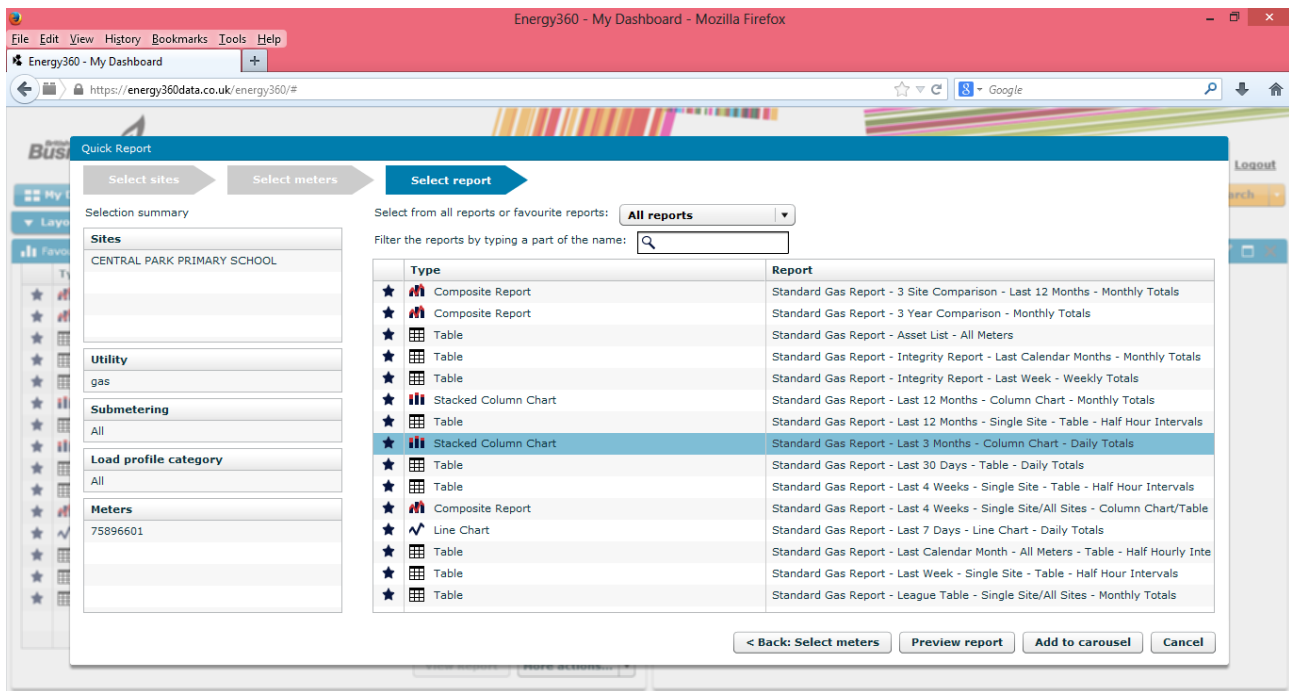


Select: "Next: Select report>"

You then have a selection of reports that can be used to present the information.

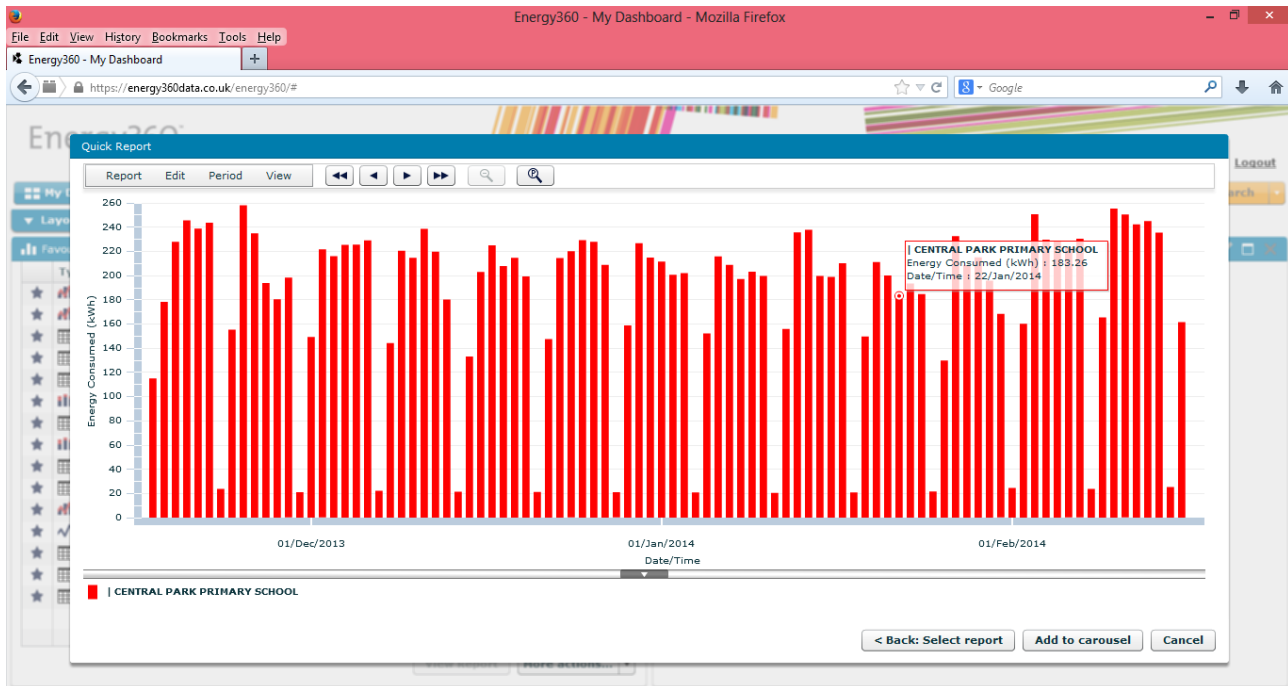


Select: **"Stacked column chart"**.
 This will display the gas consumption for the last three months

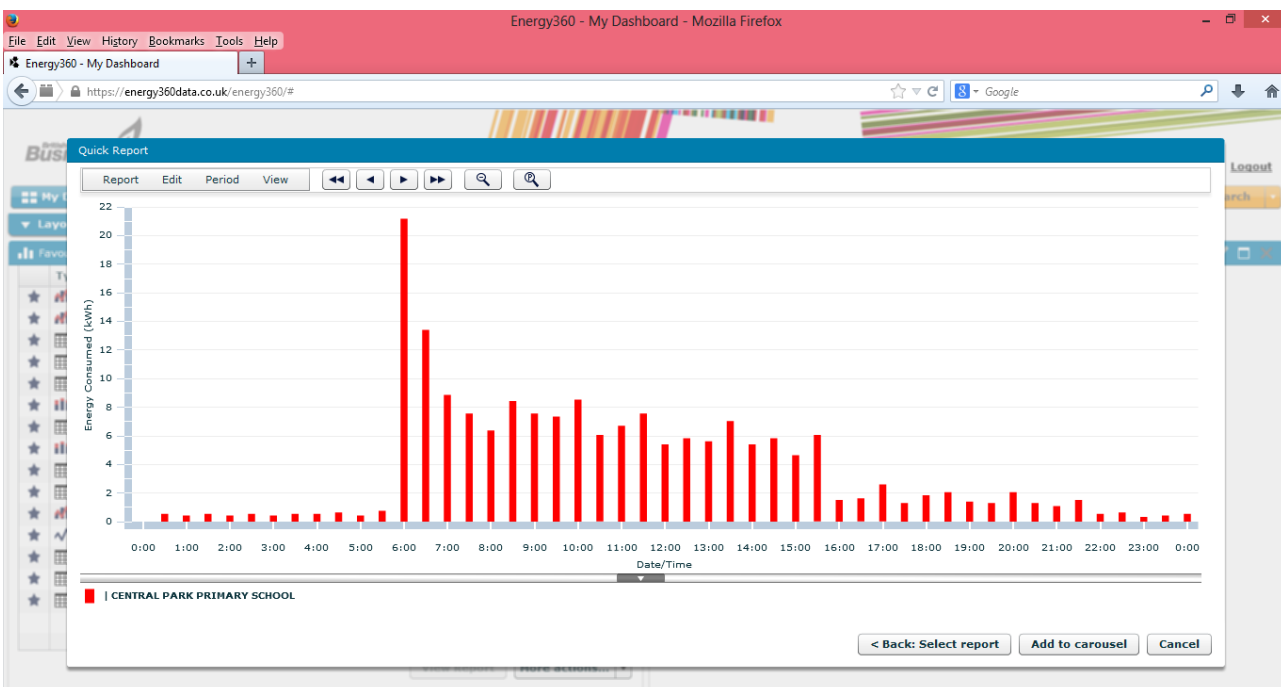


Click on: **"Preview report"**
 Do not at this time select **"Add to dashboard"** as this is a shared dashboard with all schools

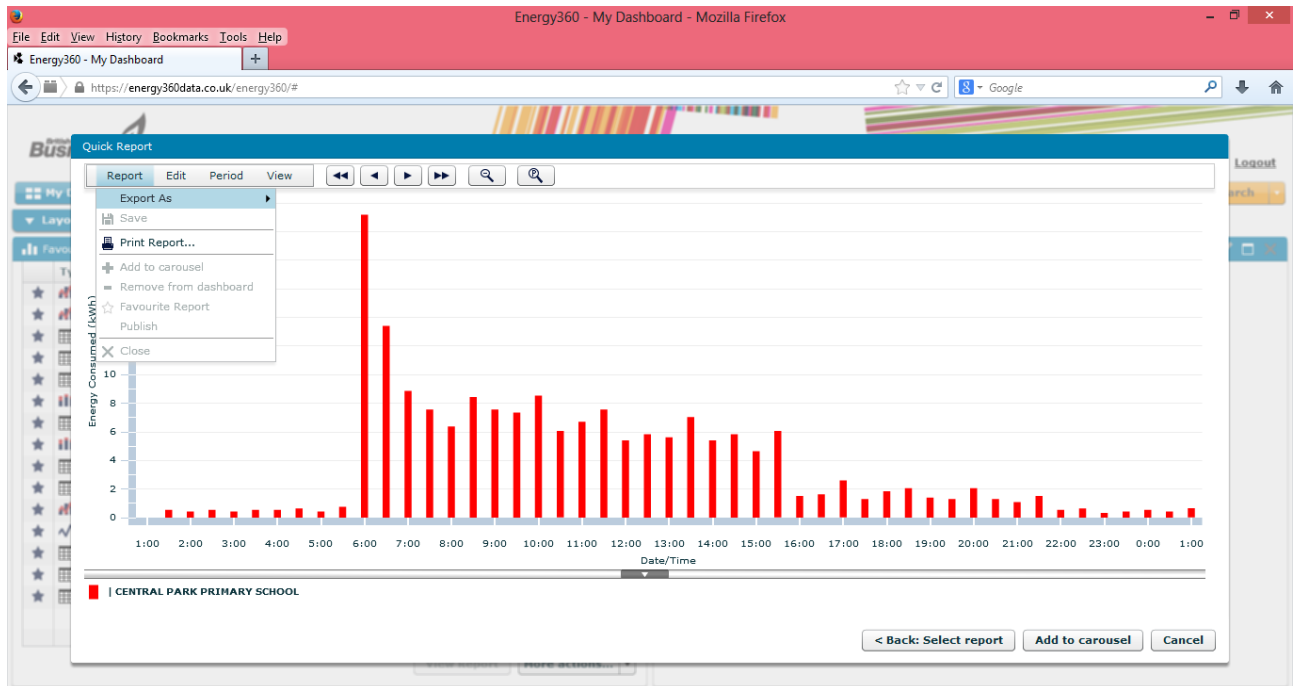
- ☆ This report shows the daily gas use over the last three months up to date. The consumption is in kWh.



- ☆ By **hovering over** any point on the graph, consumption data is shown in a box.
- ☆ **Click onto any date** selected and this will open up to provide a detailed graph showing consumption every half hour of the day.



- ☆ The **arrow keys** (top middle) will move the graph back or forward by an hour > or a day >>
- ☆ This graph can be printed or exported as an image from the **REPORT** button top left.



To return to look at other meters select: **"BACK:SELECT REPORT"** or **"CANCEL"**
 The cancel button will take you back to the start of the process.

☆ More detailed information about CO2 usage is available in Table reports.

Select: **"TABLE gas consumption for the last 30 days"**

Type	Report
★ Composite Report	Standard Gas Report - 3 Site Comparison - Last 12 Months - Monthly Totals
★ Composite Report	Standard Gas Report - 3 Year Comparison - Monthly Totals
★ Table	Standard Gas Report - Asset List - All Meters
★ Table	Standard Gas Report - Integrity Report - Last Calendar Months - Monthly Totals
★ Table	Standard Gas Report - Integrity Report - Last Week - Weekly Totals
★ Stacked Column Chart	Standard Gas Report - Last 12 Months - Column Chart - Monthly Totals
★ Table	Standard Gas Report - Last 12 Months - Single Site - Table - Half Hour Intervals
★ Stacked Column Chart	Standard Gas Report - Last 3 Months - Column Chart - Daily Totals
★ Table	Standard Gas Report - Last 30 Days - Table - Daily Totals
★ Table	Standard Gas Report - Last 4 Weeks - Single Site - Table - Half Hour Intervals
★ Composite Report	Standard Gas Report - Last 4 Weeks - Single Site/All Sites - Column Chart/Table
★ Line Chart	Standard Gas Report - Last 7 Days - Line Chart - Daily Totals
★ Table	Standard Gas Report - Last Calendar Month - All Meters - Table - Half Hourly Inte
★ Table	Standard Gas Report - Last Week - Single Site - Table - Half Hour Intervals
★ Table	Standard Gas Report - League Table - Single Site/All Sites - Monthly Totals

Again click on **"Preview report"**.

- ☆ This time the information is in table form showing daily consumption and the CO2 emission for each day in kg of CO2

Energy360 - My Dashboard - Mozilla Firefox

Energy360 - My Dashboard

Quick Report

Report Edit Period View

Simple

Grand Totals	Site Name	Date	Energy Consumed (kWh)	Volume Consumed (m3)	Volume Consumed (ft3)	Inherent Emissions (kgCO ₂ e)
	CENTRAL PARK PRIMARY SCHOOL	18/January/2014	20.80	19.20	678.05	11.26
	CENTRAL PARK PRIMARY SCHOOL	19/January/2014	149.72	138.20	4880.49	81.00
	CENTRAL PARK PRIMARY SCHOOL	20/January/2014	211.14	194.40	6865.18	114.23
	CENTRAL PARK PRIMARY SCHOOL	21/January/2014	200.10	184.70	6522.62	108.25
	CENTRAL PARK PRIMARY SCHOOL	22/January/2014	183.27	169.60	5989.37	99.15
	CENTRAL PARK PRIMARY SCHOOL	23/January/2014	193.49	178.60	6307.20	104.68
	CENTRAL PARK PRIMARY SCHOOL	24/January/2014	184.60	170.40	6017.62	99.87
	CENTRAL PARK PRIMARY SCHOOL	25/January/2014	21.51	19.80	699.24	11.64
	CENTRAL PARK PRIMARY SCHOOL	26/January/2014	129.79	119.80	4230.70	70.22
	CENTRAL PARK PRIMARY SCHOOL	27/January/2014	232.59	213.60	7543.22	125.83
	CENTRAL PARK PRIMARY SCHOOL	28/January/2014	208.54	192.00	6780.42	112.82
	CENTRAL PARK PRIMARY SCHOOL	29/January/2014	215.06	197.50	6974.65	116.35
	CENTRAL PARK PRIMARY SCHOOL	30/January/2014	197.90	186.00	6448.25	110.35
	CENTRAL PARK PRIMARY SCHOOL	31/January/2014	197.90	186.00	6448.25	110.35
	Minimum		20.80	19.20	678.05	11.26
	Maximum		255.24	235.60	8320.14	138.09
	Average		175.52	161.84	5715.33	94.96
	Sum		5265.58	4855.20	171459.77	2848.68

< Back: Select report Add to carousel Cancel

- ☆ The table this can be exported using **REPORT** - export as CSV straight into Excel